

Equipment for Sale



Equipment and Machinery (Lots A, and G) of Papierfabrik Zwingen, Zwingen (Switzerland)

This document is also available under www.papierfabrik-zwingen.ch

The information contained in this document is passed on without any representations or warranties respecting its accuracy and completeness. A Buyer must rely solely on representations or warranties included in the final Purchase Agreement.

No exclusivity (neither for all or parts of the Equipment nor for specific territories) has been assigned to any buyer or intermediary. No fees will be paid by Seller; intermediaries should cooperate with and be compensated by a buyer of their choice.

I Contacts and Information

For technical questions and for arranging plant tours please contact:

Heiko Abel

Phone : +41 61 763 11 50

Fax: +41 61 763 11 51

Email: heiko.abel@papierfabrik.ch

For all other questions please contact:

Hansjörg Rettenmund

Telefon: +41 71 282 40 20

Fax: +41 71 282 40 22

e-mail: hansjoerg@rettenmund-consulting.ch

Please submit your offer to the Administrator only:

Rettenmund Consulting

Lindenstrasse 137

CH-9016 St. Gallen (Switzerland)

phone : +41 71 282 40 20

fax : +41 71 282 40 22

Email: info@rettenmund-consulting.ch

The information contained in this document is passed on without any representations or warranties respecting its accuracy and completeness. A Buyer must rely solely on representations or warranties included in the final Purchase Agreement.

No exclusivity (neither for all or parts of the Equipment nor for specific territories) has been assigned to any buyer or intermediary. No fees will be paid by Seller; intermediaries should cooperate with and be compensated by a buyer of their choice.

II Index

I	Contacts and Information	I
II	Index	II
1	TECHNICAL SPECIFICATIONS OF PAPER MACHINE No. 2 (Lot A)	1
1.1	MACHINE DATA	1
1.2	Stock Preparation.....	2
1.3	Approach Flow	2
1.4	Head Box	3
1.5	Wire Part.....	3
1.6	Press Part	4
1.7	Dryer Part.....	4
1.8	Size Press.....	4
1.9	Machine Calander	5
1.10	Pope Reel	5
1.11	Drive.....	5
1.12	Vacuum System	6
1.13	Steam and Condensate System	6
1.14	Hood and Ventilation system	6
1.15	Central Oil Lubrication system	6
1.16	Process Control System.....	7
1.17	Machine Hall Cranes.....	7
1.18	Spares.....	7
2	JAGENBERG VARI ROLL WINDER, Type 330-15 (Lot G).....	11
2.1	MACHINE DATA	11
2.2	Photos.....	12

The information contained in this document is passed on without any representations or warranties respecting its accuracy and completeness. A Buyer must rely solely on representations or warranties included in the final Purchase Agreement.

No exclusivity (neither for all or parts of the Equipment nor for specific territories) has been assigned to any buyer or intermediary. No fees will be paid by Seller; intermediaries should cooperate with and be compensated by a buyer of their choice.

1 TECHNICAL SPECIFICATIONS OF PAPER MACHINE No. 2 (Lot A)

Manufacturer: Bruderhaus, Germany

Year of Manufacture: 1922

Year of rebuild: 1980 /1984 /1990

Rebuilds:

- New Head box,	Bruderhaus, in 1980
-New Wire Part,	Bruderhaus, in 1980
-New Press Part,	Bruderhaus, in 1980
-New Size Press,	Neu Bruderhaus in 1984
-Rebuild of 2nd Press with a	Küster Roll in 1990
-New 2 Nip Tandem Mat on Line calander,	Küsters, in 1990

1.1 MACHINE DATA

Working width:	2240 mm at Pope reel
Design speed:	600 m / min
Operating speed:	450 m / min
Substances:	33- 160 g / sq.m
Qualities:	100 % Recycled graphical grades
Production capacity:	30 000 TPA saleable paper on 80 gsm
Drive side	Machine has a left hand drive when looking in the direction of paper flow.
Electrical source	500 V, 50 Hz.

The information contained in this document is passed on without any representations or warranties respecting its accuracy and completeness. A Buyer must rely solely on representations or warranties included in the final Purchase Agreement.

No exclusivity (neither for all or parts of the Equipment nor for specific territories) has been assigned to any buyer or intermediary. No fees will be paid by Seller; intermediaries should cooperate with and be compensated by a buyer of their choice.

1.2 Stock Preparation

Deinked stock from DIP Plant.

1 Voith vertical pulper, type VS, 1978

5 Conical refiners, make Bell, Kriens, 1963

2 Conical refiners, Escher Wyss

1 Claflin Wide angle refiner, Type 303 with 450 KW motor, 1978

4 Escher Wyss deflakers, type E 1 with 55 KW motors

Agitators and pumps for the different chests that are in concrete

1.3 Approach Flow

3 stage cleaner unit, Voith, with 17 bottles in the first stage, 4 bottles in the second stage and one bottle in the third stage. Cleaner units complete with piping, valves, pumps with motors.

Primary pressure screen, Finckh, Type K 60 L, 1993, basket with 1.8 mm holes, 27000 lpm at 0.5 % consistency

Secondary screen, Voith, Type 1, 1959

Tertiary screen, vibrating type, make Finckh, 1.2 sq.m

Mixing chest and machine chest are made of concrete and tile lined. Agitators with motors and chest discharge pumps with motors are included in the delivery.

Fan pump, Sulzer, 1987, capacity: 14000l / min. Fan pump does not have a variable speed drive.

The information contained in this document is passed on without any representations or warranties respecting its accuracy and completeness. A Buyer must rely solely on representations or warranties included in the final Purchase Agreement.

No exclusivity (neither for all or parts of the Equipment nor for specific territories) has been assigned to any buyer or intermediary. No fees will be paid by Seller; intermediaries should cooperate with and be compensated by a buyer of their choice.

1.4 Head Box

Bruderhaus make, Type 270 BL, Stainless steel clad, Pressurized head box with 2 holey rolls, Pond width: 2380 mm, capacity: 13000 lpm, with 18 manual spindles for adjustment of slice lip.

1.5 Wire Part

Wire length: 30.200 metres

Wire width: 2550 mm

Cantilever wire part

Wire shake mechanism

Breast roll 490 mm diameter x 2650 mm face length, rubber covered

Forming Board

8 single foils adjustable with ceramic covers

2 foil boxes with 6 ceramic foils each

2 foil boxes with 5 ceramic foils each

1 foil box with 3 ceramic foils

1 foil box with 4 plastic foils

2 wet suction boxes with ceramic covers

Dandy Roll 1000 mm diameter, driven

6 dry suction boxes with ceramic covers

Suction couch roll, Voith, 650 mm Diameter, 2500 mm perforated length, 1980

Forward drive roll 490 mm Diameter, Bruderhaus, 1980

Wire guide and wire stretch rolls

Stamm high pressure showers

The information contained in this document is passed on without any representations or warranties respecting its accuracy and completeness. A Buyer must rely solely on representations or warranties included in the final Purchase Agreement.

No exclusivity (neither for all or parts of the Equipment nor for specific territories) has been assigned to any buyer or intermediary. No fees will be paid by Seller; intermediaries should cooperate with and be compensated by a buyer of their choice.

1.6 Press Part

Pick up roll, 690 mm Diameter, rubber covered with 1 suction zone, grooved and blind drilled. Perforated length: 2450 mm

Counter Press Roll, 595 mm Diameter, 2550 mm face length, Schäfer cover

Nip pressure at first nip: 50 kN/m

2nd Nip Top roll, 595 mm diameter, 2550 mm face length, rubber covered

2nd Nip bottom roll, Küster roll, 510 mm Diameter, PU covered

Nip pressure at 2nd Nip: 100 kN / m

1.7 Dryer Part

24 Pre-Drying cylinders, 1250 mm diameter x 2400 mm face length

13 Post Drying cylinders, 1250 mm diameter x 2400 mm face length

1 cooling cylinder 1500 mm x 2400 mm face length

All cylinders are designed for an operating steam pressure of 2.5 bar

All cylinders have Johnson steam heads, type 2600 LNARQ, All cylinders are equipped with stainless steel scoops

The dryer part has grey cast iron frames

Rope feed system trough the dryer part

1.8 Size Press

Horizontal size press with vertical paper feed

Both the rolls have 592 mm diameter and 2400 mm face length

Linear pressure: 50 kN

Starch addition 2 g / sq.m at max. 10 % consistency

The information contained in this document is passed on without any representations or warranties respecting its accuracy and completeness. A Buyer must rely solely on representations or warranties included in the final Purchase Agreement.

No exclusivity (neither for all or parts of the Equipment nor for specific territories) has been assigned to any buyer or intermediary. No fees will be paid by Seller; intermediaries should cooperate with and be compensated by a buyer of their choice.

1.9 Machine Calander

Make: Küsters, Krefeld, Germany

Year: 1990

Type: Tandem Mat-On-Line

The Calander has two separate Nips with nip loading capacity up to 250 daN/cm

The rolls have a face length of 2500 mm

The Cast Iron rolls are heated with a max surface temperature of 100 deg. C.

1.10 Pope Reel

This Pope reel with reel spool magazine was installed in 1990 supplied by Bell, Kriens. Pope reel drum, 800 mm diameter

Max. rewind diameter for pope reel is 2400 mm. For operational reasons, max. re-wind diameter is 1800 mm

1.11 Drive

Mechanical:

Wire part and Press part with Flender gear boxes, cardan shafts

Dryer part with Flender Gearboxes, silent drive, drive via felt rolls

Electrical drive:

All the motors and Inverter Drive, designed for a speed of 500 m / min was supplied by ABB. Type SAMI SELMA.

The information contained in this document is passed on without any representations or warranties respecting its accuracy and completeness. A Buyer must rely solely on representations or warranties included in the final Purchase Agreement.

No exclusivity (neither for all or parts of the Equipment nor for specific territories) has been assigned to any buyer or intermediary. No fees will be paid by Seller; intermediaries should cooperate with and be compensated by a buyer of their choice.

1.12 Vacuum System

1 Sulzer Turbair, Type KRC 45-20 with 420 KW motor

1 Sulzer Turbair, Type KRC 45-S with 160 KW motor

1 Sulzer Turbair, Type KRC 35-15 with 185 KW motor

1.13 Steam and Condensate System

Cascade type, Flow sheet for this system is available

1.14 Hood and Ventilation system

Completely enclosed hood was supplied by Valmet-Brunnschweiler, Gorizia

The heat recovery system with heat exchangers, fans etc are available. The heat energy from the system is used for pocket ventilation

1.15 Central Oil Lubrication system

COL system was supplied by MAAG TEKNIK, Zürich. All drying cylinder bearings and calander bearings are connected to this system

The information contained in this document is passed on without any representations or warranties respecting its accuracy and completeness. A Buyer must rely solely on representations or warranties included in the final Purchase Agreement.

No exclusivity (neither for all or parts of the Equipment nor for specific territories) has been assigned to any buyer or intermediary. No fees will be paid by Seller; intermediaries should cooperate with and be compensated by a buyer of their choice.

1.16 Process Control System

Accuray 1180 Micro System, 1990, measurement of moisture, substance, caliper and ash. No controlling of these parameters

Calcoil system before the Mat Calander

Ulma Hole detector from ABB-Strömberg

1.17 Machine Hall Cranes

Machine hall cranes at wet end and dry end are old and not worth dismantling

1.18 Spares

There are a number of spares available with the machine. Please ask for a separate list with major parts

The information contained in this document is passed on without any representations or warranties respecting its accuracy and completeness. A Buyer must rely solely on representations or warranties included in the final Purchase Agreement.

No exclusivity (neither for all or parts of the Equipment nor for specific territories) has been assigned to any buyer or intermediary. No fees will be paid by Seller; intermediaries should cooperate with and be compensated by a buyer of their choice.

Photos



Deflakers



Head Box



Deflakers



Drive



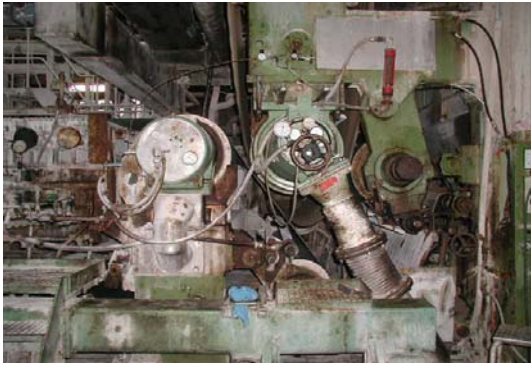
Dandy Roll



Wire part

The information contained in this document is passed on without any representations or warranties respecting its accuracy and completeness. A Buyer must rely solely on representations or warranties included in the final Purchase Agreement.

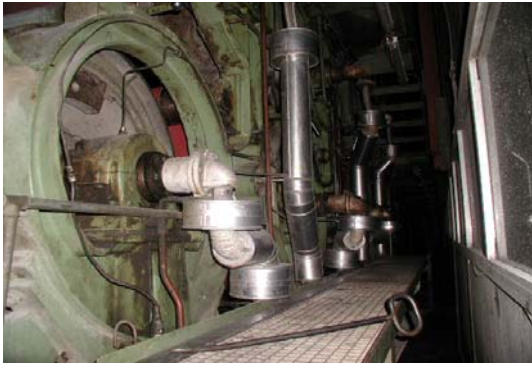
No exclusivity (neither for all or parts of the Equipment nor for specific territories) has been assigned to any buyer or intermediary. No fees will be paid by Seller; intermediaries should cooperate with and be compensated by a buyer of their choice.



Pick Up Press



Second Press



Dryer Part



Size Press



ULMA Hole Detector



Mat-On-Line Calander

The information contained in this document is passed on without any representations or warranties respecting its accuracy and completeness. A Buyer must rely solely on representations or warranties included in the final Purchase Agreement.

No exclusivity (neither for all or parts of the Equipment nor for specific territories) has been assigned to any buyer or intermediary. No fees will be paid by Seller; intermediaries should cooperate with and be compensated by a buyer of their choice.



Control Panels



Electrical Panel



ABB QCS Frame



Dryer part

The information contained in this document is passed on without any representations or warranties respecting its accuracy and completeness. A Buyer must rely solely on representations or warranties included in the final Purchase Agreement.

No exclusivity (neither for all or parts of the Equipment nor for specific territories) has been assigned to any buyer or intermediary. No fees will be paid by Seller; intermediaries should cooperate with and be compensated by a buyer of their choice.

2 JAGENBERG VARI ROLL WINDER, Type 330-15 (Lot G)

2.1 MACHINE DATA

Make:	Jagenberg
Year:	1983
Rebuild	1991
Working Width:	2600 mm
Speed	1500 m / min
Max rewind diameter:	1500 mm
Max. unwind diameter	1800 mm
Substances	40-120 g /sq.m
Electrical source	500 V, 50 Hz.

Consisting of:

Reel spool back stand with 5 fold pneumatic braking shoes on drum.

Single Drum winding, Drum Diameter 750 mm

No. of slitting knives: 6 pairs

Number of rewind stations: 3 for shaftless rewinding on cores 76 mm and 120 mm diameters

Single motor DC drive, motor 86 KW



The information contained in this document is passed on without any representations or warranties respecting its accuracy and completeness. A Buyer must rely solely on representations or warranties included in the final Purchase Agreement.

No exclusivity (neither for all or parts of the Equipment nor for specific territories) has been assigned to any buyer or intermediary. No fees will be paid by Seller; intermediaries should cooperate with and be compensated by a buyer of their choice.

2.2 Photos



The information contained in this document is passed on without any representations or warranties respecting its accuracy and completeness. A Buyer must rely solely on representations or warranties included in the final Purchase Agreement.

No exclusivity (neither for all or parts of the Equipment nor for specific territories) has been assigned to any buyer or intermediary. No fees will be paid by Seller; intermediaries should cooperate with and be compensated by a buyer of their choice.